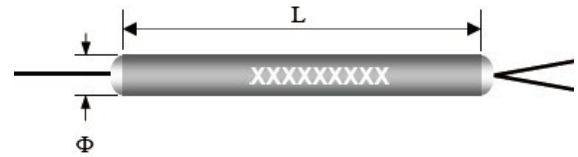
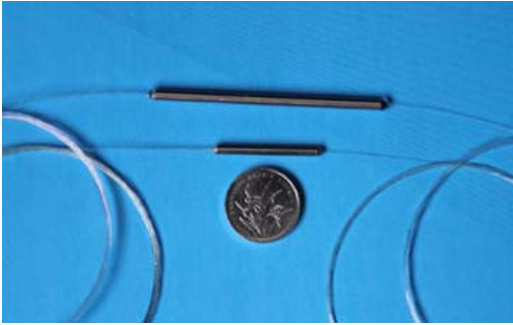




Mini Size Fused WDM

DK Photonics' 980/1550nm and 1480/1550nm Mini Size WDM are widely used in EDFA. They combine the pump power and optical signal into the Er-fiber. 980/1550nm WDM is used for EDFA C-band, and the 980/1590nm WDM is used for EDFA L-band. The normal WDM were built of Corning HI1060flex or OFS BF05635-02 fiber. The mixed fiber 980/1550nm WDM uses SMF-28 standard fiber as coupler's 1550nm signal port, while the 980nm pump port and the common port use Corning HI1060flex or OFS BF05635-02 980nm fiber.

DK Photonics' products are Telcordia GR-1221/1209-CORE qualified, and RoHS compliant.



Features

- ◆ Mini Size
- ◆ Low PDL
- ◆ Low insertion loss
- ◆ High wavelength isolation
- ◆ Extremely good stability and reliability

Applications

- ◆ Optical fiber amplifier
- ◆ EDFA module
- ◆ Communications system

Performance Specifications

Parameter	Specification				
	980/1550nm WDM			1480/1550nm WDM	
Type					
Grade	S	P	A	P	A
Operating Wavelength (nm)	980/1550+15			1480/1550+5	
Max. Insertion Loss (dB)	0.15	0.20	0.30	0.30	0.40
Isolation (dB)	> 20	> 20	> 18	> 15	> 13
Polarization Sensitivity (dB)	< 0.05	< 0.05	< 0.05	< 0.10	< 0.10
Directivity (dB)	> 55				
Operating Temperature (°C)	-10 ~ +70(-40 ~ +85 available upon request)				
Storage Temperature (°C)	-40 ~ +85				
Fiber Type	Corning HI 1060 or CS 980			Corning SMF-28	
Fiber Pigtail Length (m)	1m or custom length				
Package Dimension(mm)	A:Φ2.4×25; B:Φ2.4×30; C:Φ3.0×35				
Port Configuration	1x2 or 2x2				

*The above specification is without connector.

Order information

FBT-①-②②-③③③③-④-⑤-⑥⑥-⑦⑦-⑧⑧

①	②②	③③③③	④	⑤	⑥⑥	⑦⑦	⑧⑧
Grade	Wavelength	Port	Package	Fiber Type	Fiber Diameter	Fiber Length	Connector
S: S Grade P: P Grade A:A Grade	95:980/1550nm 45:1480/1550nm	0102:1x2 0202:2x2	A:Packag e A B:Packag e B C:Packag e C	0:SMF-28 1:Corning HI 1060 2:CS 980 3:HI 1060Flex S:Special	25:250um 90:900um 20:2.0mm 30:3.0mm XX: Others	05:0.5m 10:1.0m 15:1.5m XX:Others	00:None FP: FC/PC FA: FC/APC SP: SC/PC SA: SC/APC LP: LC/PC LA: LC/APC ST: ST/PC XX: Others