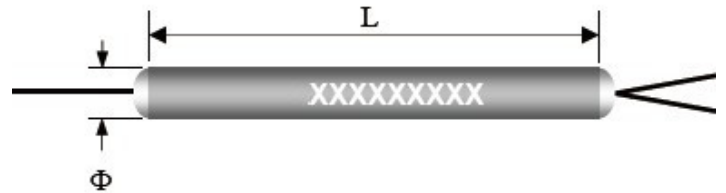
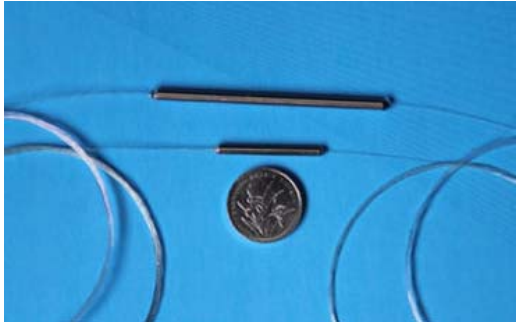




Mini Size Fused Coupler

DK Photonics' Mini Size Fused Coupler offer very low insertion loss, low polarization dependence and excellent environmental stability. Accurate coupling ratio from 50/50 to 1/99 and fiber type 250um bare fiber is available with very tight uniformity. Single mode standard coupler and wideband coupler components find extensive application to perform power splitting and monitoring functions in all kinds of optical communication systems.

All DK Photonics' products are Telcordia GR-1221/1209-CORE qualified, and RoHS compliant.



Features

- ◆ Wide Bandwidth
- ◆ Low excess loss
- ◆ Various coupling ratio
- ◆ Compact size

Applications

- ◆ Local area networks
- ◆ Long-haul telecommunications
- ◆ CATV systems & Fiber sensors

Performance Specifications

Parameter	Specification
Operating Wavelength(nm)	1310 /1550, or other
Operating bandwidth(nm)	±40
Coupling Ratio (%)	1-50
Excess Loss (Typical)(dB)	0.10(P Grade); 0.15(A Grade)
Directivity (dB)	≥55 dB
Operating Temperature	-40 ° C - 85 ° C
Storage Temperature	-40 ° C - 85 ° C
Fiber Type	Corning Singlemode SMF-28 , DS Fiber, or Flexcore
Fiber Pigtail Length (m)	1meter
Port Configuration	1x2 or 2x2
Pigtail type	250µm bare fiber
Package Dimension(mm)	A:Φ2.4×25; B:Φ2.4×30; C:Φ3.0×35

Coupling Ratio/Insertion Loss Conversion Chart

Coupling Ratio	Insertion Loss	
	Premium	A Grade
50/50	3.6	3.8
40/60	4.7/2.7	5.0/2.9
30/70	6.0/1.9	6.4/2.1
20/80	7.9/1.2	8.4/1.4
10/90	11.3/0.5	12.7/0.8
5/95	15.2/0.4	18.5/0.5
1/99	22.5/0.3	23.0/0.4

*The above specification is without connector,

**Other specifications can be made on customer request.



Order information

FBT-①-②②-③③-④④④④-⑤-⑥-⑦⑦-⑧⑧-⑨⑨

①	②②	③③	④④④④	⑤	⑥	⑦⑦	⑧⑧	⑨⑨
Grade	Wave-length	Coupling Ratio (dB)	Port	Package	Fiber Type	Fiber Diameter	Fiber Length	Connector
P: P Grade A:A Grade	35:1310/1 550nm 36:1310/1 585nm XX: Others	50:50/50 40:40/60 30:30/70 20:20/80 10:10/90 05:5/95 03:3/97 02:2/98 01:1/99 XX: Others	0102:1x2 0202:2x2	A:Package A B:Package B C:Package C	0:SMF-28 1:Corning Flexcore 1060 2:Corning Flexcore 780nm D:DS Fiber X: Others	25:250um XX: Others	05:0.5m 10:1.0m 15:1.5m XX:Others	00:None FP: FC/PC FA: FC/APC SP: SC/PC SA: SC/APC LP: LC/PC LA: LC/APC ST: ST/PC XX: Others