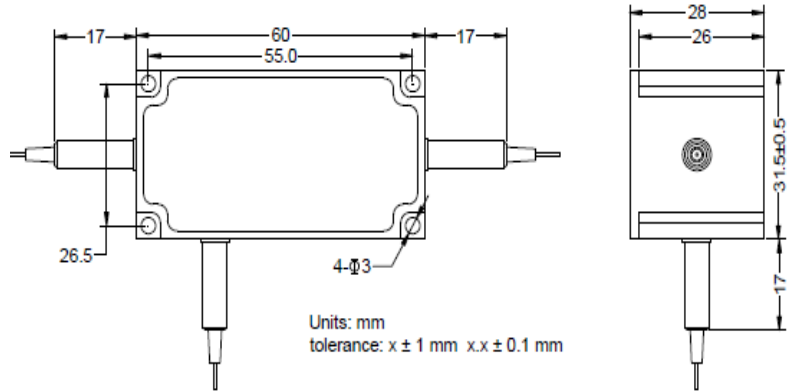
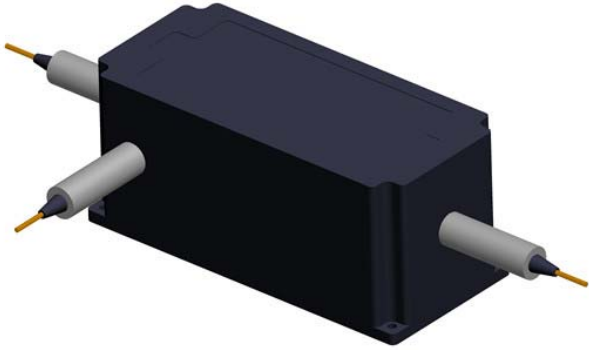




1064nm High Power Polarization Maintaining Circulator

The 1064nm High Power Polarization Maintaining Circulator is characterized with low insertion loss, high isolation, high power handling, high return loss. It is ideal for fiber laser and instrumentation applications.



Features

- ◆ High Isolation
- ◆ Low Insertion loss
- ◆ High Extinction Ratio
- ◆ High Stability and Reliability
- ◆ Cost Effective

Applications

- ◆ Fiber optic Amplifiers
- ◆ Pump Laser Source
- ◆ Fiber optic Sensor
- ◆ Test and Measurement
- ◆ Instrumentation

Performance Specifications

Parameter	Specification
Operation Wavelength (nm)	1064
Typ. Peak Isolation (dB)	25
Min. Isolation, λc, 23 °C (dB)	22
Typ. Insertion Loss, 23 °C (dB)	1.3
Max. Insertion Loss, 23 (dB)	1.5
Min. Extinction Ratio	20
Cross Talk (dB)	45 (Typ. 50)
Return Loss (dB)	> 45
Power Handling (W)	10
Max. Peak Power for ns Pulse(KW)	10
Max. Tensile Load(N)	5
Operating Temperature (°C)	0 ~ +60
Storage Temperature (°C)	-40 ~ +85
Fiber Type	PM980 fiber

*Specifications may change without notice.

**Other specifications can be made on customer request.

Order information

HPMCIRI-①①-②②-③-④④-⑤⑤-⑥-⑦

①①	②②	③	④④	⑤⑤	⑥	⑦
Wavelength	Handling Power	Connector Type	Fiber Diameter	Fiber Length	Working Axis	Power Type
06:1064nm	03:3W 10:10W XX:Specify	N: None	B:250um L:900um X:Specify	10:1.0m XX:Specify	F:Fast axis blocked B:Both axis working	P:Pulse Application C:Continuous Wave