

1560nm High-Power Femtosecond Pulse Fiber Laser

Key Features

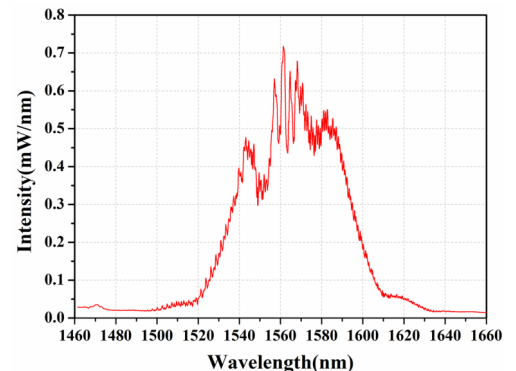
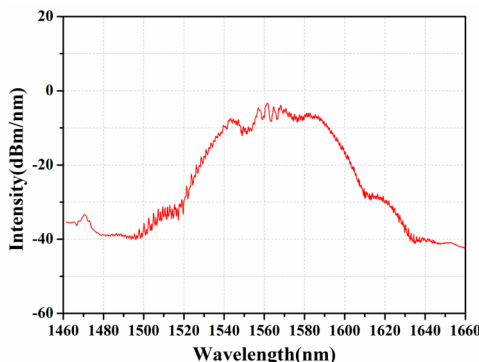
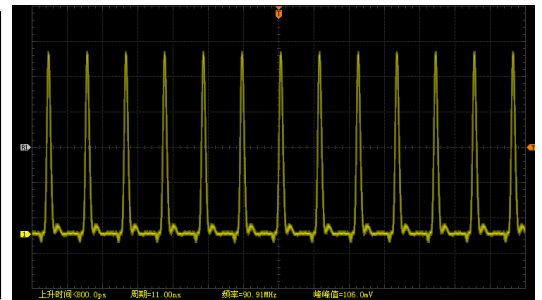
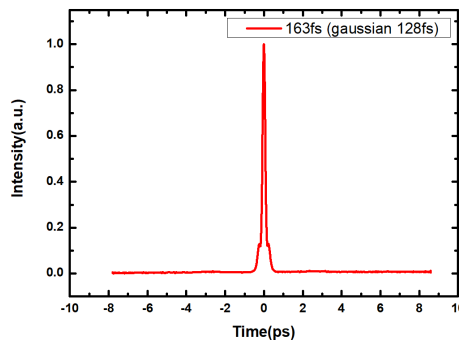
- Pulse width 120 fs
- Average laser power 1W
- Self-starting and maintenance-free
- High stability

DK Photonics E-Fiber series of high-power ultrafast lasers integrate the latest femtosecond laser technology, use high-performance rare earth fiber as the working medium, and combine high-precision dispersion compensation technology and active servo control system to achieve 1-watt average power 1.5 μ m band femtosecond pulse laser stabilization Output. One-key auto-start after power-on and long-term stable work. It has the characteristics of extremely narrow laser pulse and high pulse peak optical power. It has a wide range of applications in the fields of optical frequency comb, supercontinuum, terahertz THz and other fields.

* Accept customization of parameters such as pulse width, power, and repetition frequency.

Applications

- Optical frequency comb
- Supercontinuum
- Terahertz wave
- Ultrafast laser phenomenon



For more Info

Please contact us at:

Tel: +86-755-23736280

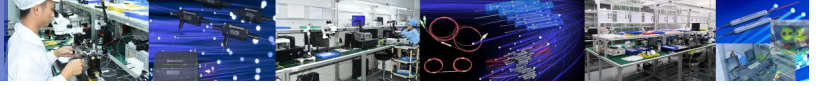
Fax: +86-755-26746512

E-mail: sales@dkphotonics.com

<https://www.dkphotonics.com>

Add.:

4F, Bldg. 18, Qinghu Industrial Park,
Dahe Road, Longhua Dis.,
Shenzhen, China 518109



Performance Specifications 1560nm High-Power Femtosecond Pulse Fiber Laser

| Optical Parameter | Unit | Typical Values | Remark |
|-----------------------|------|-------------------------------|-----------------------|
| Wavelength | nm | 1560±10 | |
| Pulse Width | fs | ≤120 | Customizable |
| Output average power | W | 1 | Customizable |
| Power instability | - | < 1% | 24h@25°C |
| Repeat frequency | MHz | 80~100 | Customizable |
| Single pulse energy | nJ | >10 | |
| Polarization state | | Linear polarization, DOP>20dB | Vertical polarization |
| Laser output | | Free-Space Output | |
| Beam quality | - | M2<1.2 | TEM00 |
| Beam diameter | mm | ≤1.6 | * 1/e2 Waist Diameter |
| Beam divergence angle | mrاد | <1.5 | |

| Electrical and environmental parameters | Unit | Typical Values | Remark |
|---|------|----------------------|------------|
| Synchronous electrical signal interface | - | SMA | |
| Preheat time | min | < 1 | |
| Operating temperature | ° C | 5 ~ 45 | |
| powered by | - | AC 110~240VAC | Power <40W |
| Size | mm | 330(W)×398(D)×112(H) | Desktop |
| weight | kg | ≤5 | |

Order information P/N: ①-②-③-④-⑤-⑥-⑦

When you inquire, please provide the correct P/N number according to our ordering information, and attach the appropriate description would be better.

| ① | ② | ③ | ④ | ⑤ | ⑥ | ⑦ |
|------|-------------|-----------------|-----------------|------------------|----------------|--------------|
| FSPL | Wavelength | Pulse Width(fs) | Output power(W) | Repeat frequency | Output Type | Package Type |
| | 1560:1560nm | 120 | 1 | 80/100 | FS: Free-space | B: Desktop |

Ordering Information for Custom Parts

If you need to customize other specifications, please provide detailed description for your requirement.