

1×2(2×2) Mini Size WDM

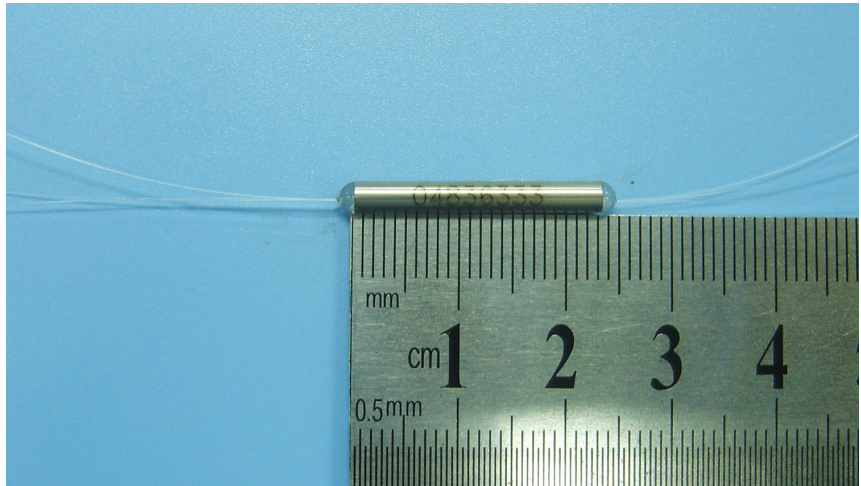
Key Features

- Mini size
- High isolation
- Low PDL
- Low excess loss
- High stability and reliability

The function and the performance of the mini size WDM couplers are the same as the regular WDM couplers. These mini size WDM couplers are widely used in EDFA modules and communication systems.

Applications

- EDFA modules
- WDM systems
- Testing instruments



For more Info

Please contact us at:

Tel: +86-755-23736280

Fax: +86-755-26746512

E-mail: sales@dkphotonics.com

<https://www.dkphotonics.com>

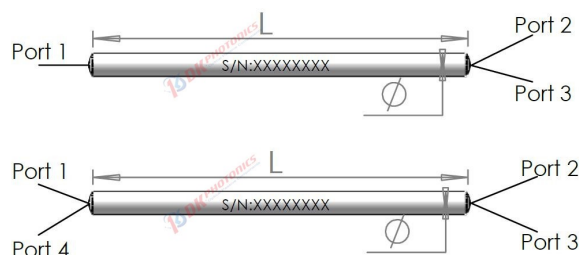
Add.:

4F, Bldg. 18, Qinghu Industrial Park,

Dahe Road, Longhua Dis.,

Shenzhen, China 518109

Package Dimension



*Due to ongoing design improvements, the package size is subject to change. Please contact DK Photonics for confirmation if you have special requirements.

1×2(2×2) Mini Size WDM

Performance Specifications

Parameter	Unit	980/1550 WDM		980/1590 WDM		1310/1550 WDM	
Operating wavelength	nm	980 and 1550		980 and 1590		1310 and 1550	
Operating bandwidth	nm	±10/20		±10/20		±15	
Configuration	-	1×2 or 2×2					
Package dimensions (Φ×L)	mm	Φ2.4/3.0×30, Φ2.4×25				Φ2.4×30	
Grade		P	A	P	A	P	A
Insertion loss	dB	≤0.25	≤0.35	≤0.25	≤0.35	≤0.25	≤0.35
Isolation	dB	≥20	≥18	≥20	≥18	≥17	≥16
PDL	dB	≤0.08	≤0.12	≤0.08	≤0.12	≤0.08	≤0.12
Fiber lead length	dB	0.8 meter, others on request				1 meter, others on request	
Fiber Type	-	Corning HI1060flex				SMF-28e	
Directivity	dB	≥55					
Maximum Power Handling	W	1					
Operating temperature	°C	-40 ~ +85					

1. Above specification are for device without connector, and may change without notice.
2. Other specifications can be made on customer request.

Order information P/N: FBTMSWDM-①-②-③-④-⑤-⑥-⑦-⑧

When you inquire, please provide the correct P/N number according to our ordering information, and attach the appropriate description would be better. If need any connector, we do not recommend choosing a 250μm bare fiber pigtail. For mini size WDM, typical applications are bare fibers without connector.

①	②	③	④	⑤	⑥	⑦	⑧
Grade	Port	Wavelength	Fiber Type	Pigtails Diameter	Fiber Length	Connector	Package
P: P Grade	102:1x2	9815: 980/1550nm	S28:SMF-28	25:250μm	05:0.5m	00:None	2.4x25
A:A Grade	202:2x2	1315: 1310/1550nm	H60F:HI1060flex	90:900μm	10:1.0m		2.4x30
			S:Special	20:2.0mm	15:1.5m		3.0x30
				30:3.0mm	XX: Others		
				XX: Others			

Part Number Example: FBTMSWDM-P-102-9815-H1060F-25-10-00-2.4x30

Description: 1x2 mini size single mode 980/1550 WDM, P grade, H1060 flex fiber, bare fiber, 1.0m length fiber pigtails, without connectors at all ports, 2.4x30mm package.

Ordering Information for Custom Parts

If you need to customize other specifications, please provide detailed description for your requirement.